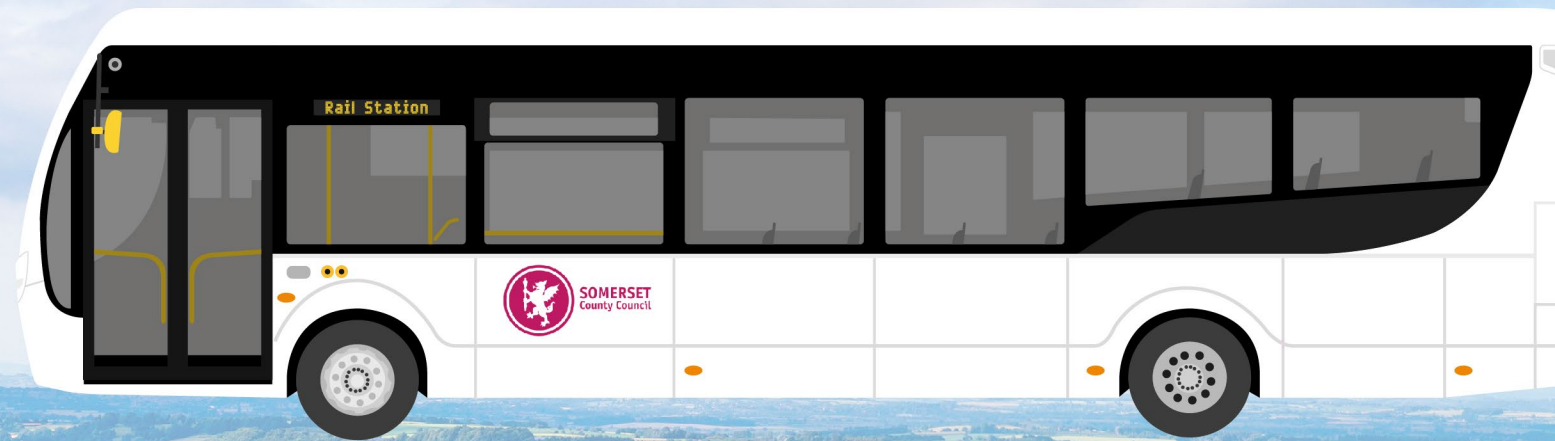


Somerset Bus Partnership Seminar

Bus/Rail Connectivity

23rd January 2023

Luke Farley – GWR Transport Integration Manager
Andrew Ardley – SWR Regional Development Manager



South Western
Railway

GWR

Great
Western
Railway

A wise Somerset Prophecy



Sir John Betjeman in
Somerset during 1963...

Railways in Somerset



Glastonbury



Wincanton



Yeovil Town



Shepton Mallet (Charlton Road)

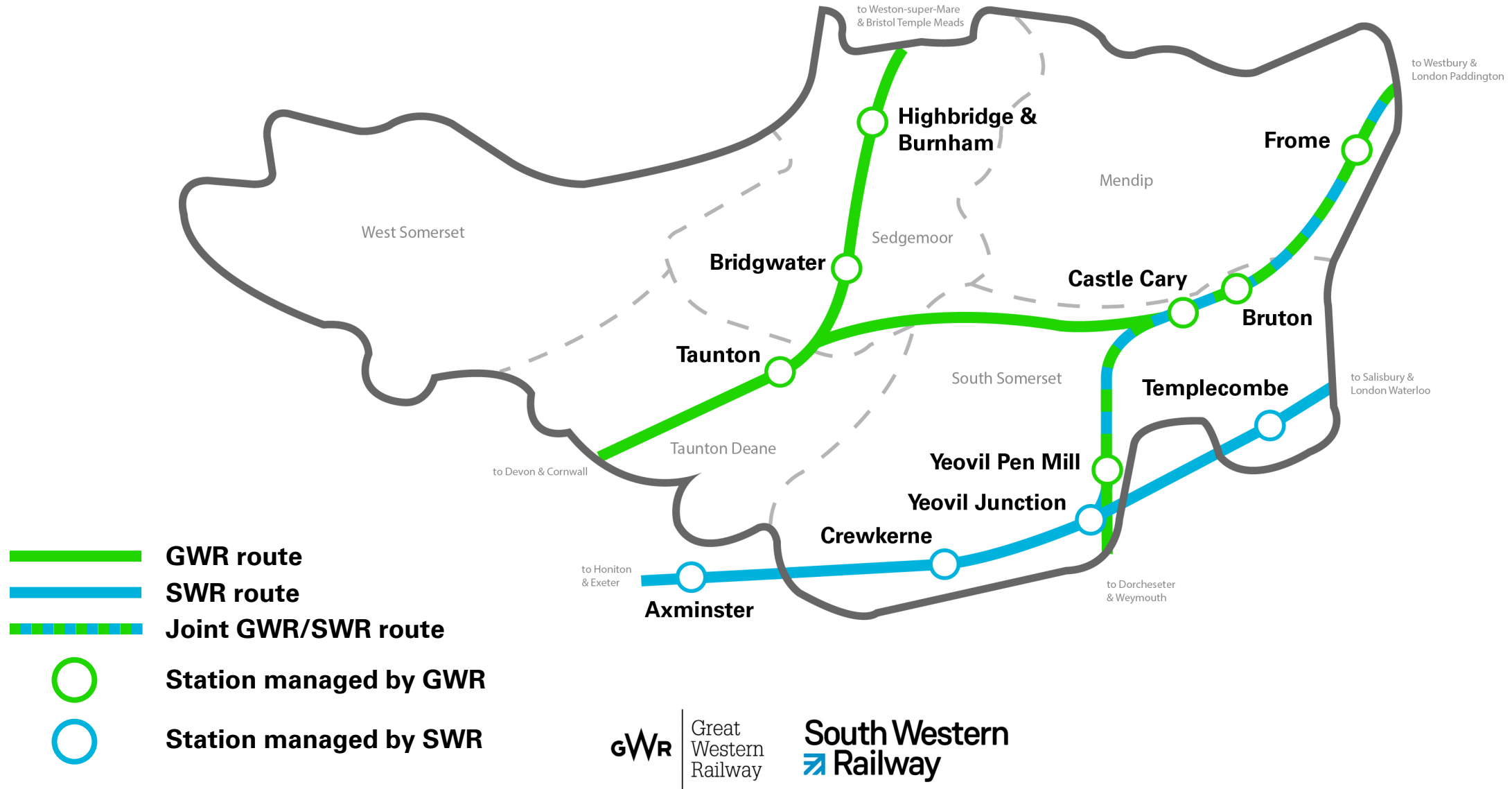


Langport



Dulverton

Railways in Somerset - 2023



Large settlements not covered directly by rail

Settlement	Population	GWR Railhead	SWR Railhead
Minehead	12,000	Taunton (25 miles)	N/A
Burnham-on-Sea	20,000	Highbridge & Burnham (1.5 miles)	N/A
Glastonbury & Street	35,000	Castle Cary (15 miles)	
Wells	12,000	Castle Cary (12 miles)	
Shepton Mallet	11,000	Castle Cary (7 miles)	Castle Cary (7 miles) Templecombe (17 miles)
Wincanton	5,500	Castle Cary (7 miles)	Castle Cary (7 miles) Templecombe (6 miles)
Yeovil	46,000	Yeovil Pen Mill (1.3 miles)	Yeovil Pen Mill (1.3 miles) Yeovil Junction (2 miles)
Chard	13,000	Taunton (15 miles) Yeovil Pen Mill (22 miles)	Yeovil Pen Mill (22 miles) Yeovil Junction (22 miles) Crewkerne (9 miles)
Wellington	17,000	Taunton (7 miles) Tiverton Parkway (10 miles)	N/A
Somerton	5,000	Castle Cary (10 miles)	Yeovil Junction (12 miles)
Radstock	10,000	Frome (8 miles) Westbury (15 miles)	

GWR, SWR and Bus/Rail Connectivity

- Both operators are committed to modal shift away from the private car
- We begin 2023 by starting a “TOC-less” approach to bus/rail integration
- We take a neutral view on working with specific bus operators
- Significant section of shared railway between Yeovil, Castle Cary, Frome and Westbury



Bus services – from major settlements to railheads

From	To (rail station)	Bus service	Approx frequency (daytime)	Bus/train connects?	To note
Minehead	Taunton	28 (Buses of Somerset)	Every 30 mins	✓	Dedicated interchange at Taunton station.
Burnham-on-Sea	Highbridge & B'ham	21 (Buses of Somerset)	Every 30 mins	✗	Buses out on the main road, but connections timetabled to miss by 3-15 minutes
Glastonbury	Castle Cary	N/A	N/A	✗	5 buses/day via Taunton (not station)
Wells	Castle Cary	N/A	N/A	✗	Connectivity via Bristol or Bath
Shepton Mallet	Castle Cary Templecombe	1/1B/1C (South West Coaches) N/A	8 buses a day N/A	✗ ✗	Times between bus/train aren't integrated
Wincanton	Castle Cary Templecombe	667 (South West Coaches) 58 (Buses of Somerset)	6 buses a day Every 60 minutes	✗ ✗	Times between bus/train aren't integrated Times between bus/train aren't integrated
Yeovil town centre	Yeovil Pen Mill Yeovil Junction	68 (Somerset County Council) 68 (Somerset County Council)	Every 60 minutes Every 60 minutes	✗ / ✓ ✓	Bus connects with Weymouth bound trains only
Chard	Axminster Taunton Yeovil Pen Mill Yeovil Junction Crewkerne	30 (Buses of Somerset) 30 (Buses of Somerset) N/A N/A 96 (South West Coaches)	8 buses a day 8 buses a day N/A N/A 5/6 buses a day	✗ ✗ ✗ ✗ ✗	Connects at Axminster. Doesn't serve TAU stn. 2 buses to/from Chard connect with trains to/from Salisbury
Wellington	Taunton	N/A	N/A	✗	Wellington-Taunton buses don't serve rail station
Somerton	Castle Cary	N/A	N/A	✗	No direct link. Possible by changing at Street
Radstock	Frome Westbury	N/A N/A	N/A N/A	✗ ✗	5 buses to Frome Market – don't serve station
B'wtr town centre	Bridgwater	N/A	N/A	✗	Buses do not serve the station – nearest stop out on the main road.

Lots of low hanging fruit

- Tweaks to timetables to improve connections with existing bus services
- Better wayfinding and information provision at stations
- Better information provided on board trains
- Taking the marketing opportunities that are already out there

Only £2

Get to the station for less

Travel to or from the station by bus for just £2 until 31 March.*

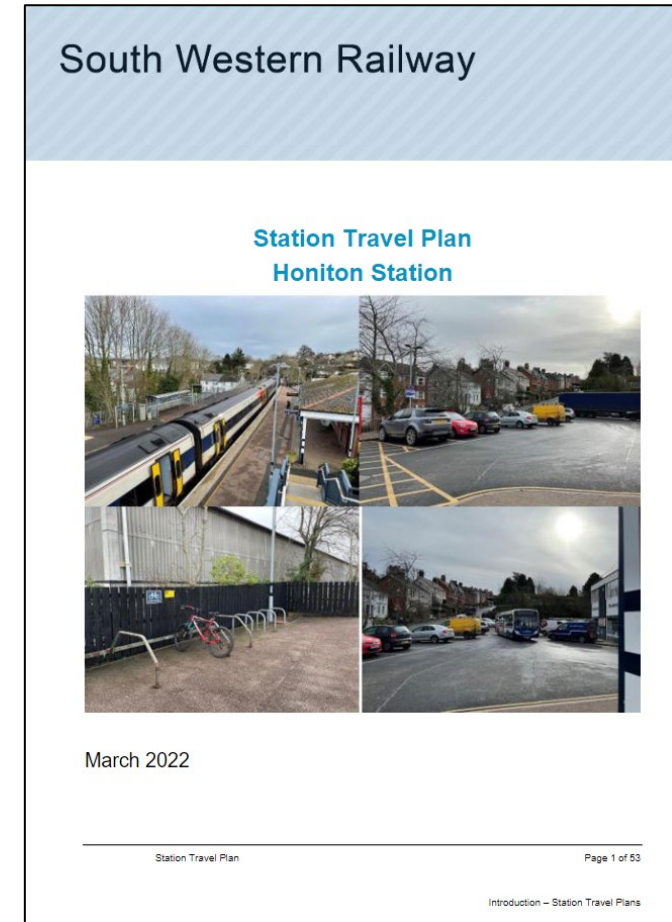
Wherever you're off to, it's now even better value to go by train and bus. Visit [Gov.uk/transport/buses](https://www.gov.uk/transport/buses) Trains and buses working together.

*£2 fare cap on single bus tickets applies from now until 31 March 2023 for all participating routes and operators. Visit [Gov.uk/transport/buses](https://www.gov.uk/transport/buses) for further details.

HM Government GWR Great Western Railway

Travel Plans

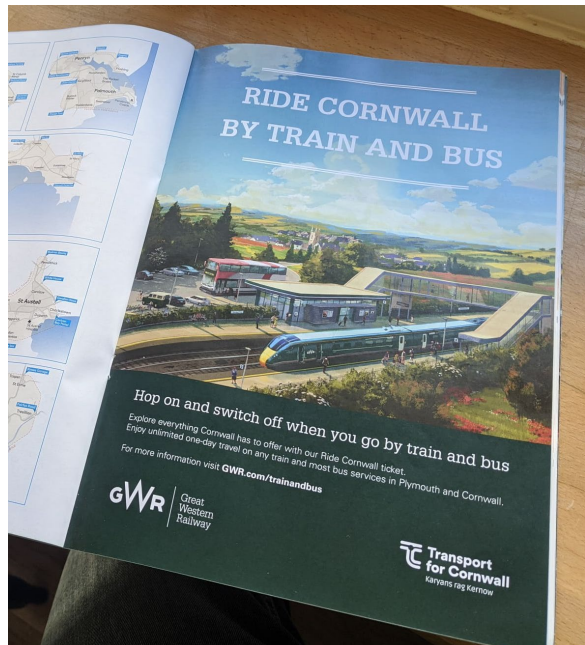
- SWR have now completed 135 travel plans in conjunction with local partners and the documents will be shared shortly
- These will form the evidence base for future schemes and initiatives, some of which are either already complete or underway
- Will be 'live' documents to update in line with local changes e.g. development/local plans, travel patterns, completed schemes etc.



Partnership Working

Change for buses to Marlborough

Use the app to book your bus
or call 01225 712 900



Partnership Working



Hop on to the station

Route D to:
Cheltenham Spa station and Hatherley
Up to **every 20 minutes**

Visit [GWR.com/trainandbus](https://www.gwr.com/trainandbus) or [Traveline.info](https://www.traveline.info) for more information

GWR Great Western Railway **Stagecoach** **traveline**

Developing Mobility Hubs at Stations

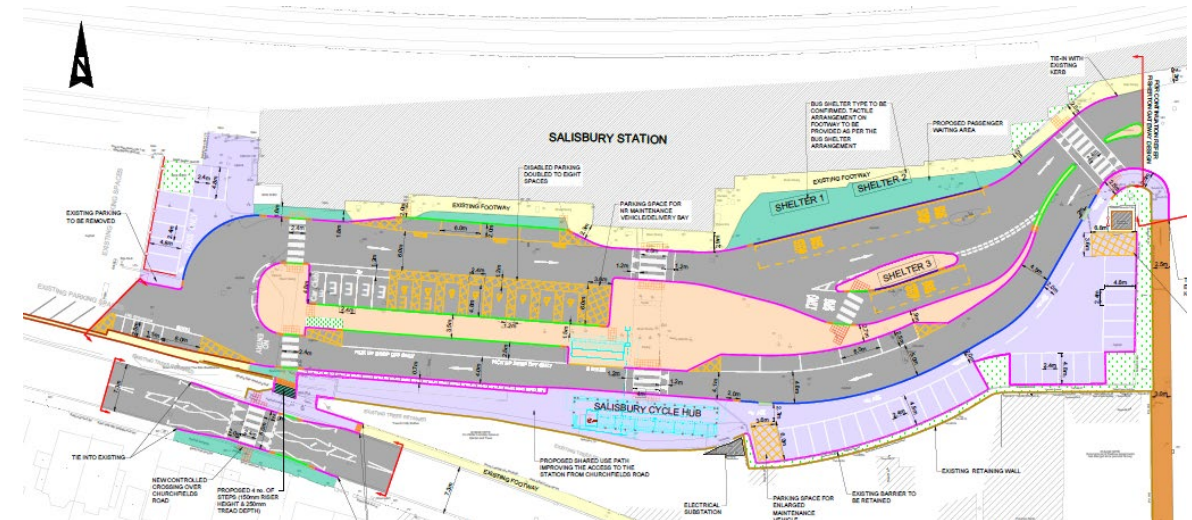
- Current forecourt schemes include:

South Western Railway:

- Weymouth (complete)
- Alton
- Salisbury
- Godalming
- Southampton Central
- Pinhoe (Devon CC, complete)

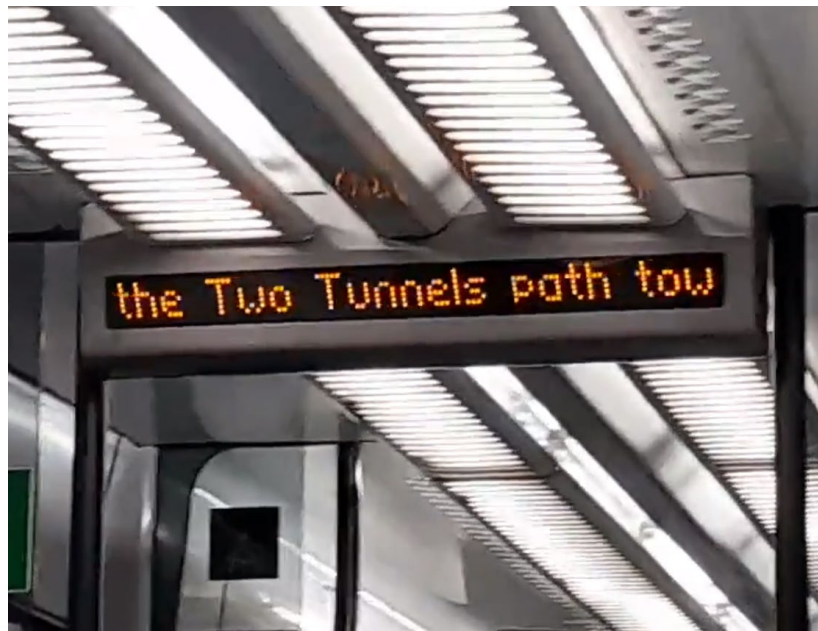
Great Western Railway:

- Taunton
- Castle Cary
- Bridgwater



Collaboration with Community Rail Partnerships

- Improved wayfinding
- Transport Integration forums
- Acting as a continual 'honest friend'



Pinhoe Interchange, Exeter & Southampton



GWR – Bus Branch Lines

- Tight relationship between train operator, bus operator and local authority
- Well integrated timetables
- Route branding on buses, timetables and publicity
- Information at stations/trains improved, including posters and announcements
- Highlighting the ease of using the service – contactless card payments, Traveline
- Review of the physical interchange – location of bus stop, wayfinding, facilities



GWR – Bus Branch Lines

Easy bus connections with the Dartmoor Line

Three Rail Link bus services from Bude, Launceston and Tavistock connect seamlessly with the Dartmoor Line. They take in stunning scenery as they make their way to and from Okehampton railway station.

Buses are timed to connect with trains and accept both cash and contactless payments.

See the next pages for timetable information.



Certain bus services are financially supported by



Dartmoor National Park - easily reached by catching the train to Okehampton and onward Rail Link 118 bus towards Tavistock

Rail Link bus times

Showing Exeter connections (journey time 40 mins approx)

Certain bus services are financially supported by  Visit GWR.com for full details of train services

Rail Link 118

Tavistock - Lydford - Okehampton

Mondays - Saturdays Operated by Dartline

Tavistock, Bus Station	d	0625	0820	1020	1220	1420	1650
Mary Tavy, Garage	d	0637	0832	1032	1232	1432	1702
Lydford, War Memorial	d	0647	0849	1049	1249	1449	1719
Okehampton, West Street	d	0706	0909	1109	1309	1509	1739
Okehampton Rail Station	a	0713	0916	1116	1316	1516	1746
Train departs for Exeter	d	0725	0925	1127	1326	1525	1830

Okehampton - Lydford - Tavistock

Mondays - Saturdays Operated by Dartline

Train arrives from Exeter	a	0707	0915	1117	1316	1515	1817
Okehampton Rail Station	d	0720	0930	1130	1330	1530	1830
Okehampton, West Street	d	0730	0935	1135	1335	1535	1835
Lydford, War Memorial	d	0746	0951	1151	1351	1551	1851
Mary Tavy, Garage	d	0804	1009	1209	1409	1609	1909
Tavistock, Bus Station	a	0818	1023	1223	1423	1623	1923

Rail Link 306

Launceston - Lifton - Okehampton

Mondays - Saturdays Operated by Go Cornwall Bus

Launceston, Westgate St.	d	0628	0928	1328	1728
Lifton, Lifton Hall Hotel	d	0643	0943	1343	1743
Bridestowe, turn	d	0658	0958	1358	1758
Okehampton, West Street	d	0710	1010	1410	1810
Okehampton Rail Station	a	0717	1017	1417	1817
Train departs for Exeter	d	0725	1025	1426	1830

Okehampton - Lifton - Launceston

Mondays - Saturdays Operated by Go Cornwall Bus

Train arrives from Exeter	a	0707	1015	1417	1817
Okehampton Rail Station	d	0735	1025	1425	1825
Okehampton, West Street	d	0742	1032	1432	1832
Bridestowe, turn	d	0753	1043	1443	1843
Lifton, Arundell Arms	d	0808	1058	1458	1858
Launceston, Westgate St.	a	0820	1110	1510	1910

Rail Link 6

Bude - Holsworthy - Okehampton

Mondays - Saturdays Operated by Stagecoach

Bude, The Strand	d	0605	0910	1210	1510	1810
Holsworthy, Church	d	0627	0932	1232	1532	1832
Halwill Jct, Station Road	d	0644	0949	1249	1549	1849
Okehampton, West Street	d	0707	1010	1310	1610	1910
Okehampton Rail Station	a	0715	1017	1317	1617	1917
Train departs for Exeter	d	0725	1025	1326	1625	1931

Sundays Operated by Go Cornwall Bus

Bude, The Strand	d	0805	1405
Holsworthy, Church	d	0827	1427
Halwill Jct, Station Road	d	0844	1444
Okehampton, West Street	d	0907	1507
Okehampton Rail Station	a	0915	1515
Train departs for Exeter	d	0925	1525

Okehampton - Holsworthy - Bude

Mondays - Saturdays Operated by Stagecoach

Train arrives from Exeter	a	0707	1015	1316	1615	1922
Okehampton Rail Station	d	0725	1025	1325	1625	1925
Okehampton, West Street	d	0733	1033	1333	1633	1933
Halwill Jct, Station Road	d	0751	1051	1351	1651	1951
Holsworthy, Library	d	0811	1111	1411	1711	2011
Bude, The Strand	a	0833	1133	1433	1733	2033

Sundays Operated by Go Cornwall Bus

Train arrives from Exeter	a	1216	1818
Okehampton Rail Station	d	1228	1828
Okehampton, West Street	d	1236	1836
Halwill Jct, Station Road	d	1254	1854
Holsworthy, Library	d	1313	1913
Bude, The Strand	a	1335	1935



A scenic view of Salcombe harbor. In the foreground, a blue boat with a yellow cabin is moving across the water, leaving a white wake. Several red buoys are visible in the water. The background features a lush green hillside with some buildings and a sandy beach. The sky is blue with light clouds.

SALCOMBE

VISIT BY TRAIN AND BUS

Somerset – The GWR bucket list

Station	Short Term	Longer Term
Taunton	<ul style="list-style-type: none"> • Opening of the bus interchange • Follow up review of station information/signage • Minehead bus link – destination based marketing, improved vehicle branding and reinstatement of through ticketing 	<ul style="list-style-type: none"> • Reinstatement of key buses from large centres including Wellington and Glastonbury to the rail station • Reinstatement of train service Taunton – Bishop’s Lydeard alongside summer services Taunton - Minehead
Bridgwater	<ul style="list-style-type: none"> • Improved local bus information (where to catch it, live departure information) 	<ul style="list-style-type: none"> • Bus services to come onto the station forecourt – town centre link
Highbridge & Burnham	<ul style="list-style-type: none"> • Better wayfinding between platform and bus stop 	
Castle Cary	<ul style="list-style-type: none"> • Tweaks to timetables to improve integration between buses (Shepton Mallet) and trains • Improved wayfinding/information provision for buses at Castle Cary station 	<ul style="list-style-type: none"> • Safer bus stop facilities for Shepton-bound buses • Improved forecourt layout for larger buses • New bus links to Wells, Glastonbury & Street
Bruton	<ul style="list-style-type: none"> • N/A 	<ul style="list-style-type: none"> • Integration with 667 to Wincanton

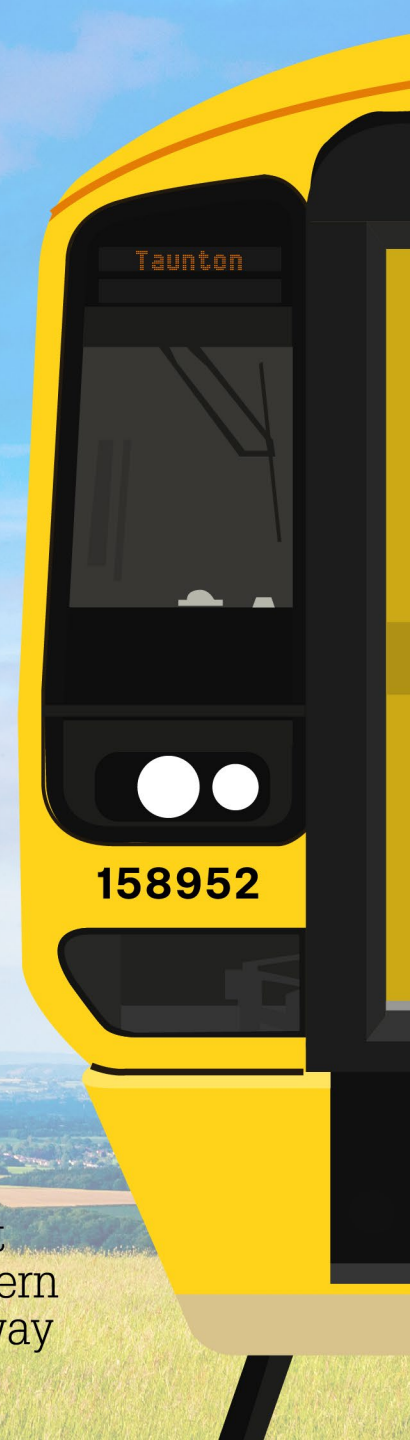
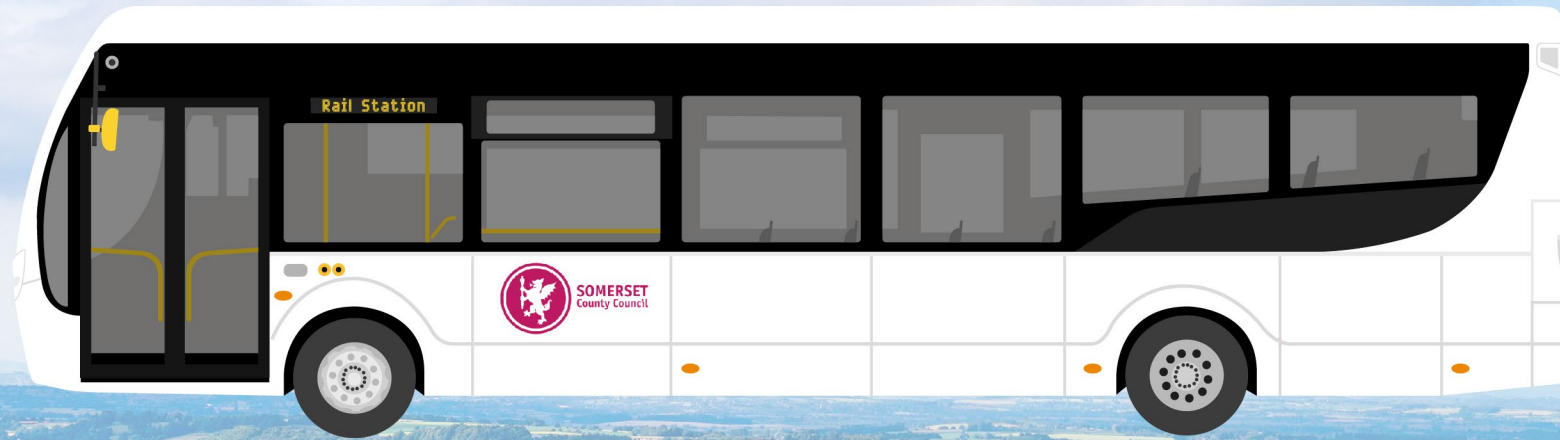
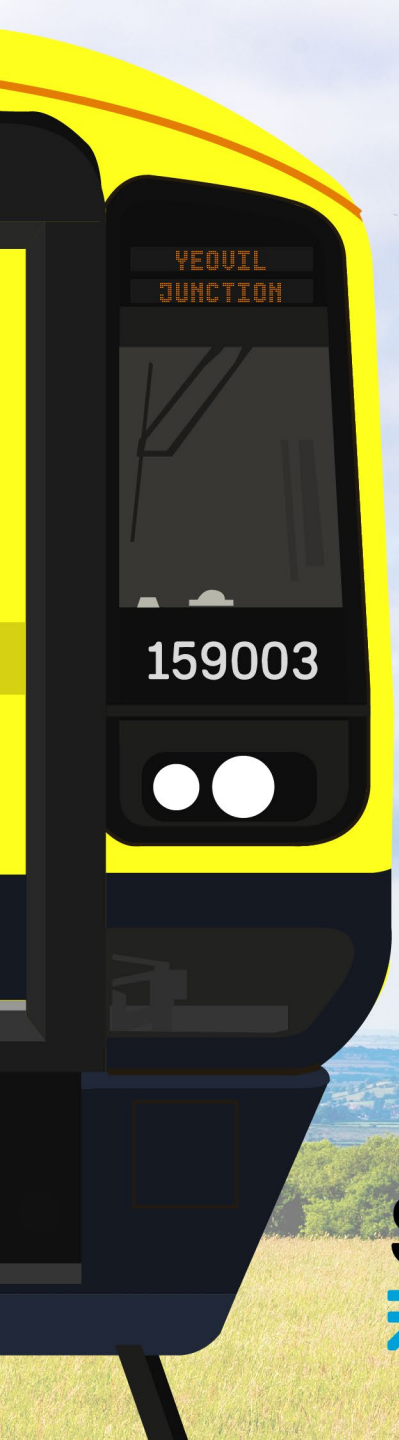
Somerset – The GWR bucket list

Station	Short Term	Longer Term
Frome	<ul style="list-style-type: none">Wayfinding to the bus stops out on the main road	<ul style="list-style-type: none">Key bus services to be extended to the railway station from Market Square
Yeovil Pen Mill	<ul style="list-style-type: none">Better visibility, promotion and integration of the Yeovil bus linkDestination marketing for Wincanton	<ul style="list-style-type: none">Consolidation of all bus services in one location (currently split between forecourt and main road)

Somerset – The SWR bucket list

Station	Short Term	Longer Term
Crewkerne		<ul style="list-style-type: none">Higher frequency link to / from Chard instead of a Chard Parkway station
Axminster	<ul style="list-style-type: none">Better visibility, promotion and integration of the Chard bus link (30)	<ul style="list-style-type: none">Timetable work on the 30 to better integrate with Exeter bound servicesHigher frequency link to / from Chard instead of a Chard Parkway station
Yeovil Junction	<ul style="list-style-type: none">Better visibility, promotion and integration of the Yeovil bus link	
Templecombe		<ul style="list-style-type: none">Timetable work on the 58 from Wincanton to better integrate with Eastbound train services

Questions



South Western
Railway

GWR

Great
Western
Railway